

WHAT'S NEW IN THE RIT FAMILY OF PRODUCTS

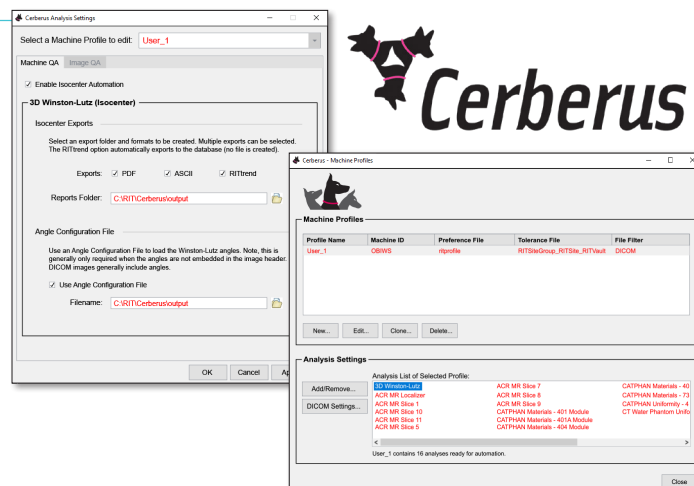
VERSION
7.0

 Windows 11 RIT NOW SUPPORTS THE WINDOWS 11 PRO 64-BIT OPERATING SYSTEM

ISOCENTER OPTIMIZATION

HANDS-FREE ANALYSIS WITH CERBERUS

We have combined RIT's convenient hands-free feature with our most popular routine. Cerberus is now available to optimize your efficiency when performing EPID-based 3D Winston-Lutz isocenter analysis. Additionally, Cerberus can set up multiple profiles unique to different machines with specific preferences and tolerances. After a quick and easy setup, Cerberus actively monitors designated folders on your device. As images are dropped into any one of the watched folders, Cerberus automatically identifies, analyzes, and exports the results in RIT-supported formats of your choice, streamlining your workflow. The Cerberus system constantly operates in the background of your machine, without even having to open RIT software.



COUCH ISOCENTER WITHOUT SETUP ERROR MEASUREMENT

In the analysis results display tabs, a new set of measurements will display the Couch Isocenter Without Setup Error. This measurement will plot the deviation with ball setup error removed, providing additional insights in your analysis.

ENHANCED ELEKTA BIPOLAR COORDINATE SYSTEM

In collaboration with Elekta, RIT software will now display the results in the GT direction of the Elekta Bipolar coordinate system as sign-flipped. This will match Elekta Field Service documentation, making for easier interpretation.

SOFTWARE LICENSING

ENHANCED LICENSE MANAGER

RIT's improved License Manager allows for better license tracking and usage. After a license return, the License Manager will now track the number of server-based licenses available for our Floating License and Local License Server models. License availability is confirmed upon software closure, enabling users to easily view and manage their license count. When all licenses are in use, the License Manager directs any additional users to a list of system names from the devices currently holding them.

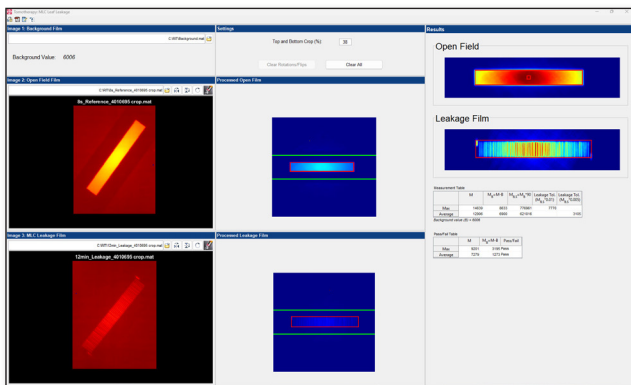
LICENSE AUTO-RETURN TIMEOUT PREFERENCE

RIT software now provides users of server-based license models with the new option to implement a timeout mechanism preference, which will auto-return licenses after a predetermined time limit. This is a helpful addition for users that have a limited number of licenses in relation to the number of devices used, and who occasionally forget to return their server licenses.

WHAT'S NEW IN THE RIT FAMILY OF PRODUCTS

VERSION
7.0

TOMOTHERAPY®



TOMOTHERAPY® MLC LEAKAGE ANALYSIS

The RIT *Complete* software package now has a new feature for TomoTherapy MLC Leakage analysis. The MLC Leakage analysis routine will fully automate the leakage calculation specified in Accuray's *Physics Essentials Guide*, which can significantly increase the repeatability of your measurements. The results can be easily exported as a PDF report, ASCII report, or to the RIT*trend*™ database for statistical process control.

OVERHEAD LASER TOP CROP PERCENTAGE

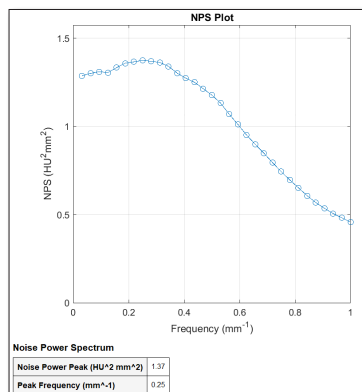
Cropping lines have been added to the image in the Overhead Laser (Laser Localization) routine. With this addition, users can visually set the correct 'Top Crop Percentage' in the analysis.

UPDATES TO TOMOTHERAPY® REGISTRATION

In the TomoTherapy Registration routine, selecting a working directory for one file (e.g., the Plan) sets that path for all files in the analysis. By allowing users to keep all related files in a single directory, this feature simplifies file management by eliminating the need for repetitive path entry, thus saving time and minimizing errors.

RIT has also added support for Accuray Precision® 3. X Treatment Planning System DICOM files.

TomoTherapy® and Precision® are registered trademarks of Accuray, Inc.



NOISE POWER SPECTRUM FOR CHEESE PHANTOM

A calculation of the Noise Power Spectrum (NPS) has been added to the Cheese Phantom uniformity analysis, in compliance with ANSM* 2023.

*French National Agency for Medicines and Health Products Safety

PATIENT QA

EXPANDED MEASUREMENT VALUES

Users can adjust the Low Dose Threshold value by increasing it up to 90% of the maximum image value. This is useful for isolating changes in the highest dose regions.

UPDATED DEFAULTS FOR GAMMA ANALYSIS

The default values for Gamma Analysis (Distance-to-Agreement and Difference) have been updated to match TG-218 recommendations at 3% and 2 mm. While these default values have changed, they continue to be completely adjustable to users so that you can customize them to fit your needs.

PATIENT QA REGISTRATION WINDOW & LEVELING

The Window and Leveling adjustment in Patient QA Registration has been improved and standardized.

WHAT'S NEW IN THE RIT FAMILY OF PRODUCTS

VERSION
7.0

DIAGNOSTIC IMAGING QC

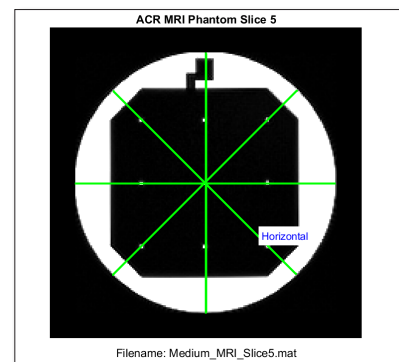
ACR MRI MEDIUM ANALYSIS

Analysis support for the ACR Medium MR phantom has been added to the ACR MRI Module, in addition to the ACR Large MR phantom and Small MR phantom analyses. The software will automatically identify the phantom size as Large or Medium with the appropriate tolerances, and allow for the tolerances to be customized.

NOISE POWER SPECTRUM FOR UNIFORMITY

Noise Power Spectrum (NPS) measurements have been added to most uniformity measurements in compliance with ANSM* 2023.

*French National Agency for Medicines and Health Products Safety



CATPHAN® MATERIALS BASELINE SLICE WIDTH

In the Catphan® Materials measurements for the Catphan OBI Module, the baseline for the slice width is now automatically taken from the DICOM slice width tag, and the user-specified tolerances are applied. This significant time-saving improvement will optimize your workflow.

Catphan® is a registered trademark of the Phantom Laboratory.

PHANTOM ANALYSIS



ADDED SUPPORT FOR PTW ELECTRON DENSITY PHANTOMS

The Electron Density module now supports analyses of the **PTW Electron Density** and **PTW RUBY Insert Electron Density** phantoms. Image analysis results can be exported as a PDF, Excel file or to the RIT *trend*™ database with a single click.

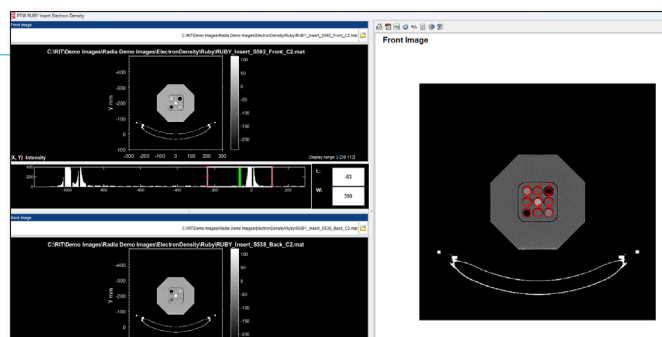


IMAGE RESOLUTION FOR TOR-18

The resolution measurement in the TOR-18 analysis has been improved to handle newer high-resolution imagers.

ADDED UNIFORMITY MEASUREMENTS

Uniformity measurements have been added to the Standard Imaging QcKv1 and QC3 phantom analysis routines.

CALIBRATION

INCREASED ROI IN PERPENDICULAR CALIBRATION

In RIT's Perpendicular Calibration routine, the maximum size of the analysis ROI has been increased to accommodate large film areas. This provides better averaging of scanner values in cases where only one dose is used per film. Sizes up to 18 x 23 cm are now supported.

RIT *trend*™ is a trademark of Radiological Imaging Technology, Inc.

WHAT'S NEW IN THE RIT FAMILY OF PRODUCTS

VERSION
7.0

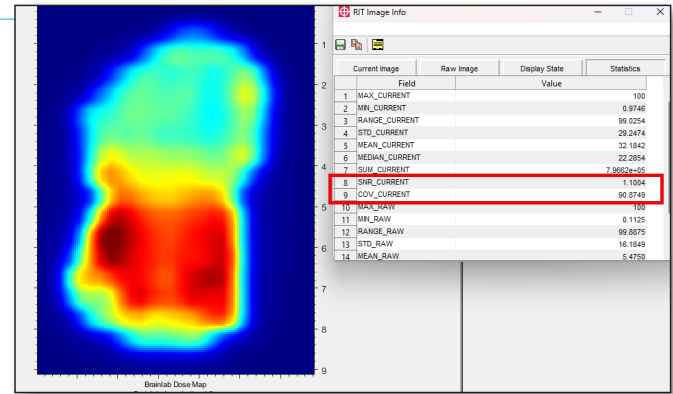
OTHER FEATURES

IMAGE INFORMATION ANALYSIS ENHANCEMENTS

To better comply with the French National Agency for Medicines and Health Products Safety, RIT's Image Information Analysis has been enhanced with additional measurements for ANSM* 2023: the Coefficient of Variation and Signal-to-Noise ratio.

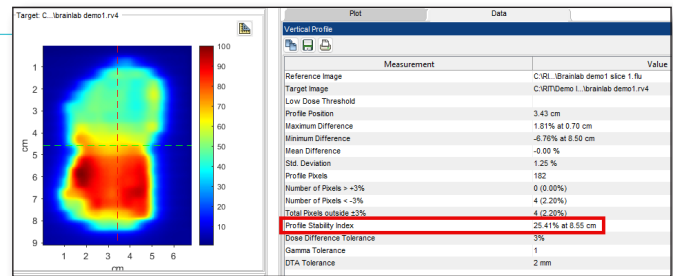
The ANSM 2023 dose profile stability index measurement has also been added to all 2D dose plots.

*French National Agency for Medicines and Health Products Safety



AUTOMATIC PDF FILE NAME GENERATION

When exporting analysis results to a PDF report, for most routines, the RIT software will now automatically suggest a file name, saving you time in your workflow and improving your efficiency. The automated PDF file names will contain the RIT routine name, a timestamp, and a pass/fail indication (when applicable). Users can always replace or modify the automatically generated file name.



ACCELERATED TECHNICAL SUPPORT WORKFLOW

RIT has made a number of improvements and additions to the information included in our software's Output Log File for streamlining the workflow of our Technical Support department. This will aid in faster technical problem diagnoses to obtain possible solutions for our customers in a more efficient manner.

ENHANCED CYBERSECURITY

With every new update, RIT continues to enhance our software's security features, reinforcing our commitment to maintaining best practices in cybersecurity. Since cybersecurity is changing all the time, Version 7.0 has a significant number of cybersecurity updates for each of the RIT products. This helps safeguard your data and give you peace of mind.

UPDATE YOUR RIT FAMILY OF PRODUCTS SOFTWARE TO VERSION 7.0!



EMAIL

sales@radimage.com



REQUEST A DEMONSTRATION

www2.radimage.com/demo



CALL

+1 (719) 590-1077, Option 4



REQUEST A PERSONALIZED QUOTE

www2.radimage.com/quote